



RMBS

January 2017

Volume 49 Issue 1

## January President's Message

by Tom Anglewicz

### Best Bonsai Wishes for 2017!

I hope that all of you had a wonderful holiday season, and that those who attended our annual holiday party really enjoyed the event. I certainly did.

I want to thank all of our members for making 2016 a terrific year for the Rocky Mountain Bonsai Society! We exceeded our most optimistic projections for membership, and it is especially rewarding to see the many new and enthusiastic members who have become actively involved with RMBS. We are committed to ongoing educational programs, workshops and instructive monthly presentations that will expand your bonsai horizons and enable you to grow your technical and aesthetic appreciation of this wonderful art form.

I especially want to express my appreciation to so many of our senior members who have stepped up to take responsibility for key elements of our activities. Bonsai classes, Saturday workshops, program organization, guest artist management, our annual bonsai and viewing stone shows, and our social events such as the holiday party and summer barbecue are only possible because leaders within our club are willing to spend the time and effort to make them happen. I thank all of you for that level of commitment!

We're looking forward to another great year in 2017. We have three really terrific guest bonsai artists lined up for you throughout the year. We'll be doing both an all-day workshop and a presentation at a regular monthly meeting with each of them.

Todd Schlafer has taken the reins as Programs Chair, and he has some great ideas for our monthly meetings and Saturday workshops, fully utilizing the depth of knowledge and expertise embodied in our membership. Thanks to Larry Jackel's foresight, we have already secured the large tent at DBG for our annual bonsai show in that venue in September. On the social side, we look forward to our second annual RMBS barbecue in mid-summer and, of course, our holiday party in December. We're also exploring the idea of organizing some interesting field trips this spring and summer.

I'm very proud to be your president for the second year of my term. I'm privileged to oversee an executive board that works well together, generates great ideas for the club, follows through on its commitments and is not afraid to risk trying new things. Let's keep the momentum going for RMBS in 2017. I know that we can accomplish much and make this society relevant and exciting for all of our members!

Tom

## 2017 SCHEDULE OF MEETINGS AND ACTIVITIES

Date and Location	
<p><b><u>Monthly Meeting</u></b>                      <b>January</b>                      Tue, January 3rd, 7:00 – 9:00 pm                      DBG Plant Society Bldg.</p>	<p><b><u>VIEWING STONE PRESENTATION</u></b>  <b>DARRELL WHITLEY AND ALAN HILLS</b>  <b><u>WINTER SILHOUETTE DISPLAY</u></b>  <b>MEMBER TREES</b></p>
<p><b><u>Monthly Meeting</u></b>                      <b>February</b>                      Tue, February 7th, 7:00 – 9:00 pm                      DBG Plant Society Bldg.</p>	
<p><b><u>Monthly Meeting</u></b>                      <b>March</b>                      Tue, March 7th, 7:00 – 9:00 pm                      DBG Plant Society Bldg.</p>	

### January Monthly Meeting

Our two nationally known stone experts, Darrel Whitley and Allan Hills, will be giving a presentation on Stones for the January long program. The presentation will include images from the **Italian Association of Suiseki Lovers**, in Bondeno, Italy. This presentation is will delve more into detail about different stones and their characteristics from Japan, China, the US and other parts of the world.

The January short program is going to be a winter silhouette. All members are invited to bring a tree that is showing off some ramification or the beginnings of ramification. We will do a quick discussion of the trees brought in. If you would like to present your tree on a stand and have an accompanying accent plant that is great but not required for this presentation.

All memberships renew this summer on July 1<sup>st</sup>, 2017. Individual memberships are \$35 per year and family memberships are \$50 per year. You may pay via cash or check at any monthly meeting, or mail your check to the address below. If you mail your check please be sure to include your email address and telephone number.

**PAYMENT ADDRESS:**

Rocky Mountain Bonsai Society  
 c/o Membership Renewal  
 PO Box 271043  
 Louisville, CO 80027

### **Akadama and Pumice for sale by RMBS**

There is still Pumice available for sale from last year's shipment. It is stored at the gardens and you can pick it up at a meeting. Contact Larry Jackel or Adam Johnson. The price is \$15 per bag.

There is still Akadama available for sale from last year's order. There are both medium and small size available. All will be in 14 liter bags at a cost of \$48/bag. Todd, and others, have ordered and used Akadama from this supplier. It is very good quality. Contact Todd and he will bring it to the next Tuesday meeting where you can pick up and pay.

## NEWS FOR MEMBERS

### **Membership Renewal:**

RMBS has adopted a policy where all membership renewals occur on July 1, and cover the succeeding 12 months, ending on June 30<sup>th</sup>.

## Shoji Screens for sale

The club is selling the Shoji screens we used in past years at the annual show. These are the screens that have black frames and white panels. The price is \$50 OBO. If you are interested please contact Todd Schlafer at [rschlafer@aol.com](mailto:rschlafer@aol.com) or 720-309-0060.

## Discounts Available to Members

We have an account established with Way to Grow Gardening Supply in Denver. You can receive discounts on some items up to 15%. You will need to tell them you are a member of RMBS.

## Classified Ads:

YAMADORI – native Rocky Mountain yamadori trees for sale or trade. Well established trees from \$75 for beginner trees to \$1,000+. Cash or trade. Please email me [adamhjo@yahoo.com](mailto:adamhjo@yahoo.com) and I can send you pictures.

## Resources for Members:

Stefan Rausch, one of our members, has published 8 articles in ofBonsai Magazine describing 8 of the classic styles of Bonsai. You can find the articles here.

[ofBonsai](#)

A couple of things on bonsai and freezing temperatures.

[Michael Hagedorn](#)

[Tato Bonsai Blog](#)

Other internet resources:

[RMBS Web Site](#)

[Colorado Bonsai Ltd.](#)

[First Branch Bonsai](#)

[S&S Bonsai](#)

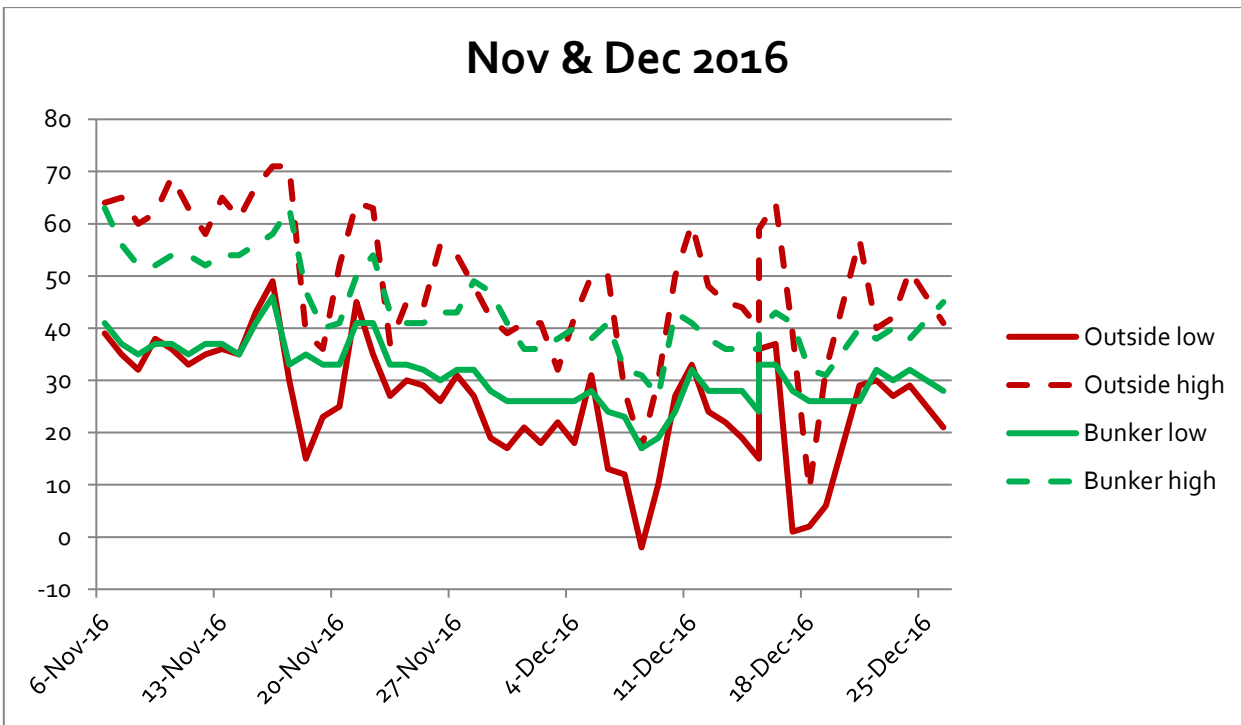
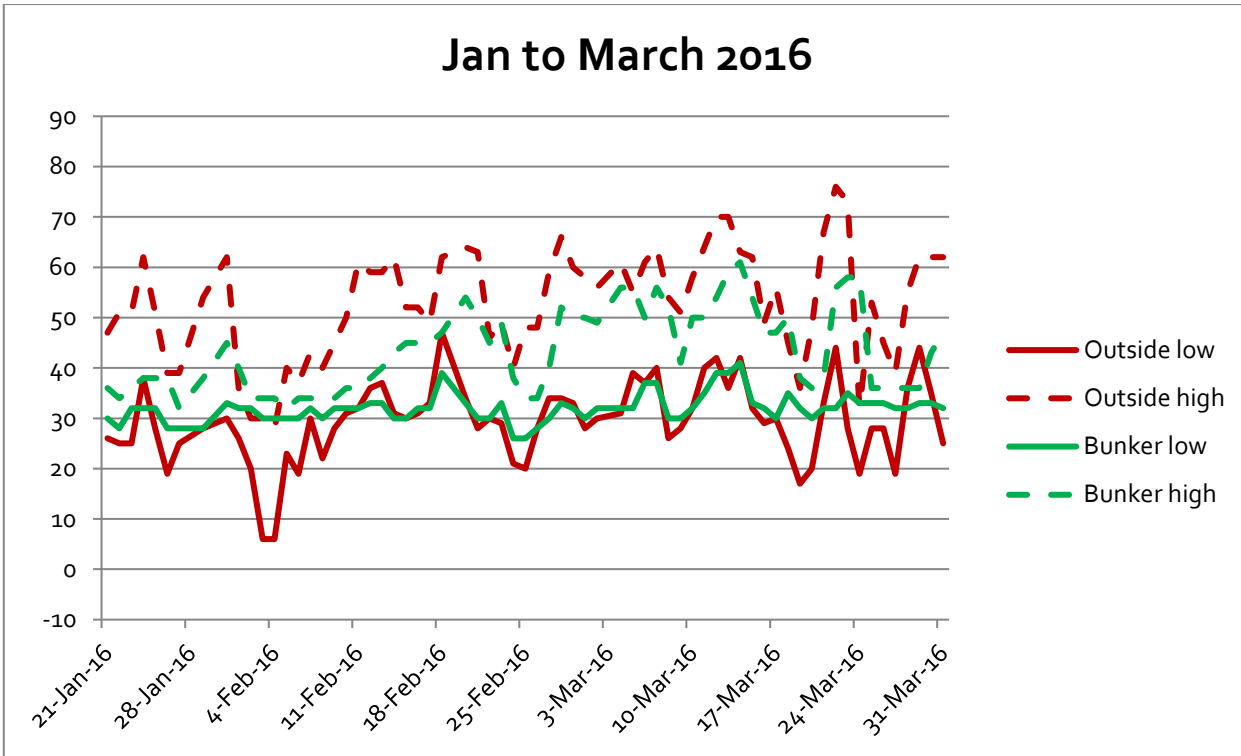
[RMBS Facebook Page](#)

## Why are bunkers useful for over wintering trees?

Below are two charts showing recordings taken this year of the daily outdoor high and low temperatures and the daily high and low temperatures in the bunker where I over winter trees.

I recorded the temperatures daily last January through March and started again this November.

The charts document the damping effect of a bunker. The temperatures in the bunker never swing as rapidly as the outside temperature. And they never go as low as the outside. The insulating effect of snow can be seen between the December 11<sup>th</sup> and 18<sup>th</sup> readings. On both dates the outside temperature dropped close to zero. However the bunker low on the 11<sup>th</sup> was about 18 while the low on the 18<sup>th</sup> was about 28 degrees. The difference is that on the 18<sup>th</sup> there was 3 or 4 inches of snow on top of the bunker.





## First Branch Bonsai

world class raw stock & bonsai  
from the rocky mountains  
[www.FirstBranchBonsai.com](http://www.FirstBranchBonsai.com)

## S&S Bonsai

Always Growing

What We Have For You.....

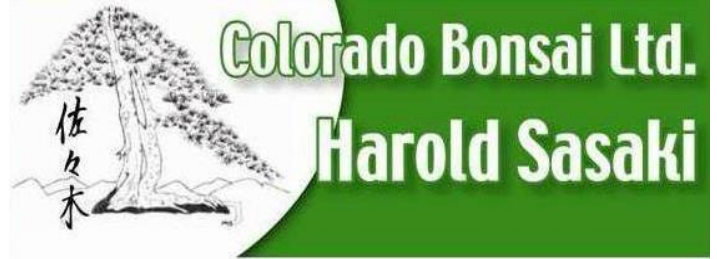
- Bonsai Trees
- Bonsai Pots
- Bonsai Tools
- Training Wire
- Bonsai Soil
- Bonsai Books
- Gift Certificates
- FREE Saturday Study Groups (Once a month)
- And more.....

We carry many trees that you will not see on our website. We suggest coming by to see them. We only ask that you call ahead and make an appointment to make sure we will be there.



**S&S Bonsai**  
1024 Bonfoy Ave.  
Colorado Springs, CO 80909  
719-633-9110  
(Open by appointment only)

Near Olympic Training Center



## The Rocky Mountain Region's most comprehensive Bonsai Nursery

Open by appointment call: 303-232-8700

Specializing in Character and Colorado Native Collected Trees, Finished Bonsai, Starter Plants, Pots, Soil, Books, Tools, Wire, Private Lessons and Online Native Spruce sales. Do you need a gift for a hard-to-shop for bonsai enthusiast? We offer Individual Bonsai Instruction Sessions and we have **Gift Certificates!!** Use them for *anything* (supplies, classes, etc.) and at *any time*.

We're located on the west side of the Denver Metro area, near I-70 and Youngfield.

Email us at: [co.bonsai.ltd@gmail.com](mailto:co.bonsai.ltd@gmail.com)

